

# Jl-114C

## Network camera outdoor 5 MPx – bullet

switch to the manual for the JABLOTRON 100+ system

The Jl-114C IP camera is used for video verification of events from the **JABLOTRON** security system. Video recordings may be made in resolution of up to 5MPx, resolution is subject to camera settings. The footage is transmitted via LAN and the Internet to a secure storage server. The user may access a live video feed via the MyJABLOTRON application, as well as the recordings made during pre-set events and, subject to the utilized subscription service, to the continuously stored footage from the camera. The camera is equipped with an IR illuminator to ensure video image capture even in low light conditions. The camera is intended for installation only by a trained technician with a valid Jablotron certificate.

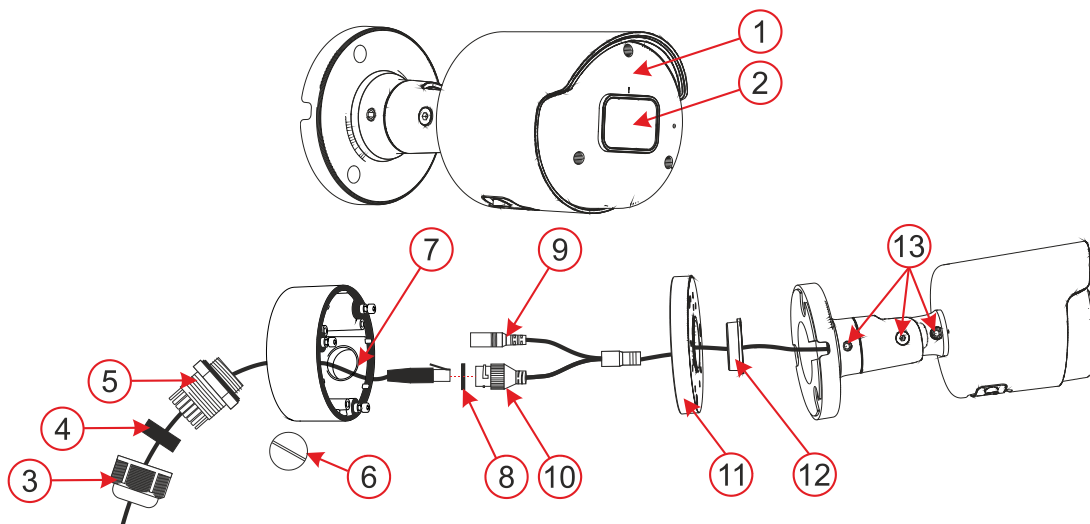


Fig. 1: Description of external and internal parts of the product and installation with mounting socket

1 – IR illuminator; 2 – camera lens; 3 – bayonet cap; 4 – cable seal; 5 – waterproof connector cover; 6 – blanking plug; 7 – side hole for cable passage; 8 – O-ring; 9 – power connector; 10 – LAN connector; 11 – mounting socket cover; 12 – cable seal; 13 – screws for camera sensing adjustment;

## Camera installation

The camera may be powered over LAN using PoE. Alternatively, the camera may be powered with a 12V DC, 0.5 A power supply, and must be connected to LAN with a RJ-45 terminated cable. A waterproof LAN housing is included in the packaging, which must be used to prevent moisture from potentially damaging the data connector. To prevent moisture from potentially damaging the data connector, a waterproof LAN connector housing must be used (which is included in the packaging).

### Installation procedure using the mounting socket

If the camera is to be mounted on a surface which does not allow the cables and connectors to be securely hidden, it is recommended to use the included mounting socket (included in the camera packaging) which covers the cables.

1. Select the location of the camera, consider the wiring and the best view of the area to be monitored.

2. Use the self-adhesive template to mark the mounting holes of the mounting base.
3. Drill holes in the selected location with a Ø 6mm drill bit and fix with dowels from the package. Open the mounting base by removing the screws. Depending on the selected cable feed method – centre or side (6), prepare a hole for running the cables. In case of side installation use the cable grommet (3, 4, 5) for the selected hole – (the cable grommet is included in the packing), use the blanking plug (6) for the unused one.
4. Pull the LAN cable through the back of the socket. Screw the back of the socket onto the selected place on the wall with the three screws provided in the packaging and crimp the RJ-45 connector with crimping pliers (see Fig. 2).
5. Plug the RJ-45 connector to LAN connector. Secure the connection with the waterproof cover (5) with the bayonet cap (3) and screw it tight. If the utilized router or switch does not provide PoE (power over Ethernet), connect the camera power connector to an external 12 V DC power supply (min. 0.5 A).
6. Screw the lid of the mounting socket to the bottom of the socket.
7. Screw the bottom of the camera to the mounting socket with the three provided screws.
8. Register the camera to MyCOMPANY to access the camera preview and and adjust the camera view as required using the screws on the camera.
9. Remove the protective film and polish the camera of any dirt and fingerprint marks, should be any present.

## Installation procedure without using the mounting socket

If the camera is to be installed on a support that can be used to protect the cables and connectors from intentional damage (e.g., lowered ceiling, plasterboard ceilings and partitions, etc.), the camera can be installed directly on such a support and the cables and connectors can be pushed through the prepared hole.

**Note:** The waterproof cover must installed on the cable before the RJ-45 data connector is crimped on.

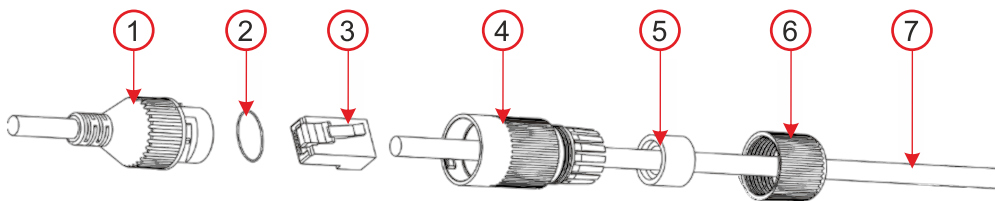


Figure 2: Way to fold the LAN connector waterproof cover

1 – camera connector; 2 – O-ring; 3 – connector; 4 – waterproof cover; 5 – cable seal; 6 – bayonet cap; 7 – internet cable;

## Connecting to the system

Depending on the type of control panel, use the recommended software or application, see the control panel manual.

## Technical parameters

<b>Power supply</b>	from PoE data connection (48V) (according to IEE 802.3af standard) alternatively via 12 V DC power connector
<b>Rated current consumption</b>	250 mA
<b>Maximum current draw</b>	458 mA
<b>Number of pixels</b>	5 Mpix
<b>Camera resolutions and bitrates</b>	1–5 MPx, 448–3072 kbps (see setting in app)
<b>FPS</b>	15
<b>Lens</b>	3.6 mm (91° angle of view)
<b>Lens type</b>	M12 plate lens
<b>Sensing chip</b>	1/2.7" Progressive CMOS
<b>WDR – half-light compensation</b>	yes

<b>Camera setup options</b>	horizontal: 91°, Vertical: 46°
<b>Communication interface</b>	LAN
<b>IR illumination range</b>	30 m
<b>Environment</b>	outdoor general
<b>Operating temperature range</b>	-35 °C to +60 °C
<b>Average operating humidity</b>	up to 75 % non-condensing
<b>Degree of protection</b>	IP67
<b>Dimensions</b>	155 x ø 71 mm
<b>Camera weight</b>	358 g
<b>Weight of socket</b>	317 g
<b>In compliance with</b>	EN 55032, EN 50130-4, EN IEC 63000



ZHUHAI RAYSHARP TECHNOLOGY, CO., LTD declares that the product JI-114C is designed and manufactured in compliance with the harmonisation legislation of the European Union: directives No: 2014/30/EU, 2011/65/EU when used as intended. The original Declaration of Conformity is available at [www.jablotron.com](http://www.jablotron.com) in the Downloads section.

Importer: streamhosting.cz, s. r. o., Kališnická 10, 130 00, Praha 3



**Note:** Disposing of this product correctly will help save valuable resources and prevent any potential negative effects on human health and the environment, which could otherwise arise from inappropriate waste handling. Please return the product to the dealer or contact your local authority for further details of your nearest designated collection point.

JI-114C

MZZ535300  
(26.08.2024)